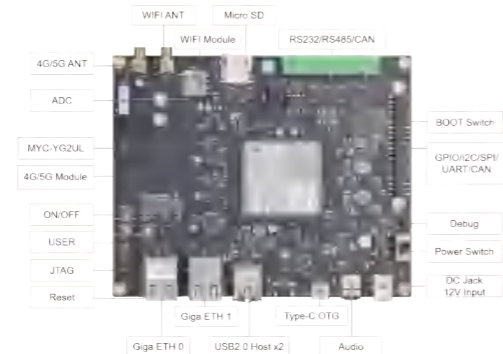


MYD-YG2UL

快速使用指南

1. 硬件接口及注意事项



MYD-YG2UL开发板正面接口图

注意事项:

1. 板卡出厂时已经烧入了出厂镜像程序在核心板的 eMMC 中,您只需要按下面步骤就可以开机启动(请确保板卡设置在 eMMC 启动)。
2. 请使用出厂配套的 12V 电源适配器,以避免损坏板卡。

2. 快速操作指引

第一步:设置BOOT选择

设置拨码开关 BOOT(S3 S2 S1 S0)成 eMMC 启动模式。

BOOT(S3 S2 S1 S0)	说明
x 0 0 0	eMMC 启动
x 1 0 0	SCFI DOWNLOAD



图中为 EMMC 启动

注意事项:

x 代表是可以任意设置为 0 或者 1

第二步:连接调试串口线

使用 USB-TTL 线,连接电脑 USB 接口和开发板 J17 接口。

J17 接口	USB-TTL 线缆
GND	GND(黑)
TXD	RXD(白)
RXD	TXD(绿)



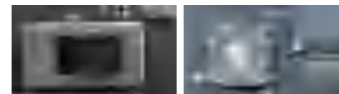
第三步:连接电源线

使用 12V 电源供电,插入开发板电源接口(J1)。



第四步:开启电源开关,板卡上电

开启电源开关 SW1,长按 ON/OFF 按键 2~3 秒。



第五步:打开调试串口,配置参数,开始调试

在主机打开串口终端软件,配置如下参数:

波特率	数据位	停止位	极性	其他
115200	8 位	1 位	无	无流控

启动完成后串口终端输出信息如下。



产品资料链接

down.myr-tech.com/MYD-YG2UL

技术支持

如您遇到使用问题,欢迎与我们联系。

邮箱: support.cn@myir.cn

电话: 0755-22316235

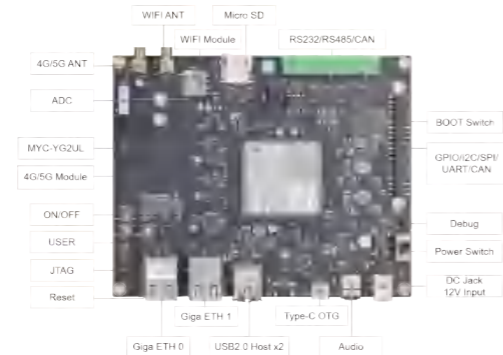
网址: www.myr.cn



MYD-YG2UL Development Kit

Quick Start Guide

1. Hardware Interface



Note: **Top View of MYD-YG2UL Development Kit**

1. The board has already burned the factory image program in the eMMC of the CPU module before delivery. You only need to follow the following steps to boot the board (please make sure the board is set to eMMC boot mode).
2. Please use the 12V power adapter coming with the board to avoid damage.

2. Quick steps to hands-on

Step1: Configure the boot options

Set the DIP switch BOOT (S3 S2 S1 S0) to the eMMC boot mode.

BOOT(S3 S2 S1 S0)	Description
x 0 0 0	Boot from eMMC
x 1 0 0	SCFI Download



The figure above shows the eMMC boot mode

Note:
'x' means it's any 0 or 1

Step 2: Connect debug port to PC

Use the USB-TTL cable to connect the USB interface of the computer and the J17 interface of the development board.

J17 Interface	USB-TTL Cable
GND	GND(Black)
TXD	RXD (White)
RXD	TXD (Green)



Step 3: Connect the power cable

Use 12V power supply and plug it into the power port (J1) of the development board.



Step 4: Turn on the power

Turn on the power switch SW1 to power on the board, long press the ONOFF button for 2~3 seconds.



Step 5: Set serial port Parameters

Open the serial port software on the host and set the following parameters

Baud rate	Data bits	Stop bit	Parity	Other
115200	8	1	No	No Flow control

The following information is displayed on the serial port terminal after the startup is complete



Download Software and Documents

d.myirtech.com/MYD-YG2UL

Technical Support

Please do not hesitate to contact us for technical support:

Email: support@myirtech.com

Telephone: (+86) 0755 22984836

Website: www.myirtech.com